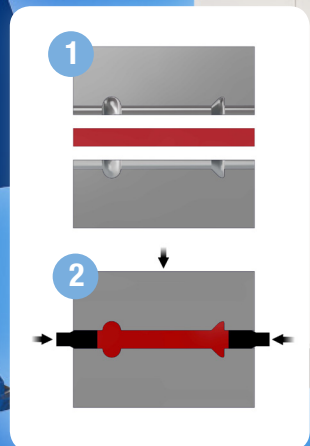
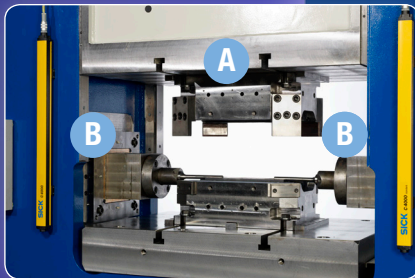


Upsetting Forging Press

Forging from two sides at extreme precision and great flexibility



The Hydraulic USP has 3 complete main systems: one clamping cylinder (A) and two side forging cylinders (B).



Fast, precise forging at lower cost

3 individual forging functions:

- one clamping/preform
- two extrusion/upsetting
- functions from the sides

Output:

Higher capacity
Increased surface quality
Excellent geometric quality
Reduced number of operations
Lower tool cost

Take full control

Ideal for precise forging and automation

Servo control with individual control of all forging parameters:

Speed, stop positions, forces and die contact time

Forging speed up to 120 mm per second!

Accuracy +/- 0,1 mm

Improved flow characteristics

Eliminate most polishing operations

Great flexibility

Allows to perform extrude operation instead of upsetting

Adapt forming speed to input material

In tool design and punch holder design

Use standard punches = lower cost, less inventory

Tool set-up is easy on the Hydraulic Upsetting Press

The harsh impact noise is eliminated

► View press specifications overleaf

Specifications

Hydraulic type USP 400
Hydraulic type USP 700



Hydraulic upsetting press

Press specifications

		Hydraulic type USP 400 Upsetting Press 400/200/200	Hydraulic type USP 700 Upsetting Press 700/500/500
Tonnage, slide	tons	40-400	70-700
Daylight	mm	700	900
Stroke, slide	mm	400	400
Table dimensions	mm	1200 x 800	1750 x 1000
T-slots	din 650	22	28
Approach speed	mm/sec	300	300
Press speed	mm/sec	33-10	29-12
Return speed	mm/sec	300	300
Axial piston pump	l/min	260	400
Main motor	KW	45	90
Total dimension h x w	mm	4800 x 2800	5600 x 4000
Tonnage Punch rh	tons	20-200	50-500
Stroke punch rh	mm	200	250
Pressing speed pump	mm/sec	66-21	39-16
Pressing speed accumulator	mm/sec	90-120	90-120
Return speed	mm/sec	100	100
Position accuracy + -	mm	0,2	0,2
Axial piston pump	l/min	260	400
Main motor	KW	45	90
Tonnage Punch lh	tons	20-200	50-500
Stroke punch lh	mm	200	250
Pressing speed pump	mm/sec	66-21	39-16
Pressing speed accumulator	mm/sec	90-120	90-120
Return speed lh	mm/sec	100	100
Position accuracy	mm	0,2	0,2
Axial piston pump	l/min	260	400
Main motor	KW	45	90
Control system		Hydraulic	Hydraulic
Shipping weight	tons	35	55
Install weight	tons	40	62

Optional equipment

(both models)

Service platform	Easy access to service and maintenance work on the hydraulic unit - with fixed vertical ladder with back brackets
Light curtain	A step forward as to personnel safety system; maximum safety with the highest degree of user friendliness
Air cooling system	A good alternative to water cooling; to be applied if no cooling tower or re-using systems for re-use of cooling water is available
Integration with robot etc.	Press can be integrated by profibus or standard I/O communication with aux equipment
Freight	Quality DOOR/DOOR solution
Approval before shipment	Approval before shipment includes trial run of press, review of technical dossier, maintenance and service



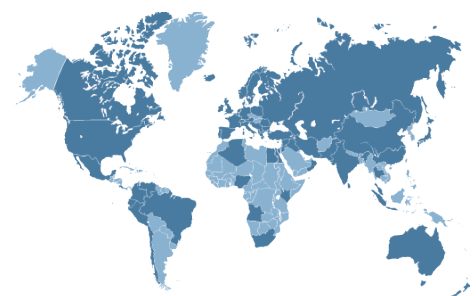
Hydraulic as

Raadhusgade 87
DK-8300 Odder
Denmark

Tel.: +45 8780 2000
Fax: +45 8780 0304

info@hydraulic.com

More information at www.hydraulic.com



Hydraulic presses and production lines are at work around the globe.
You will find local representatives in more than 16 major countries worldwide.